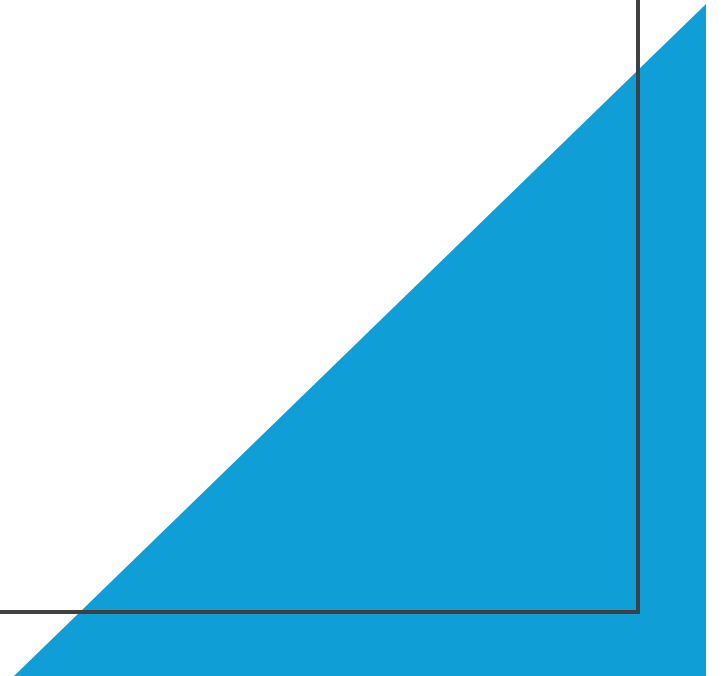


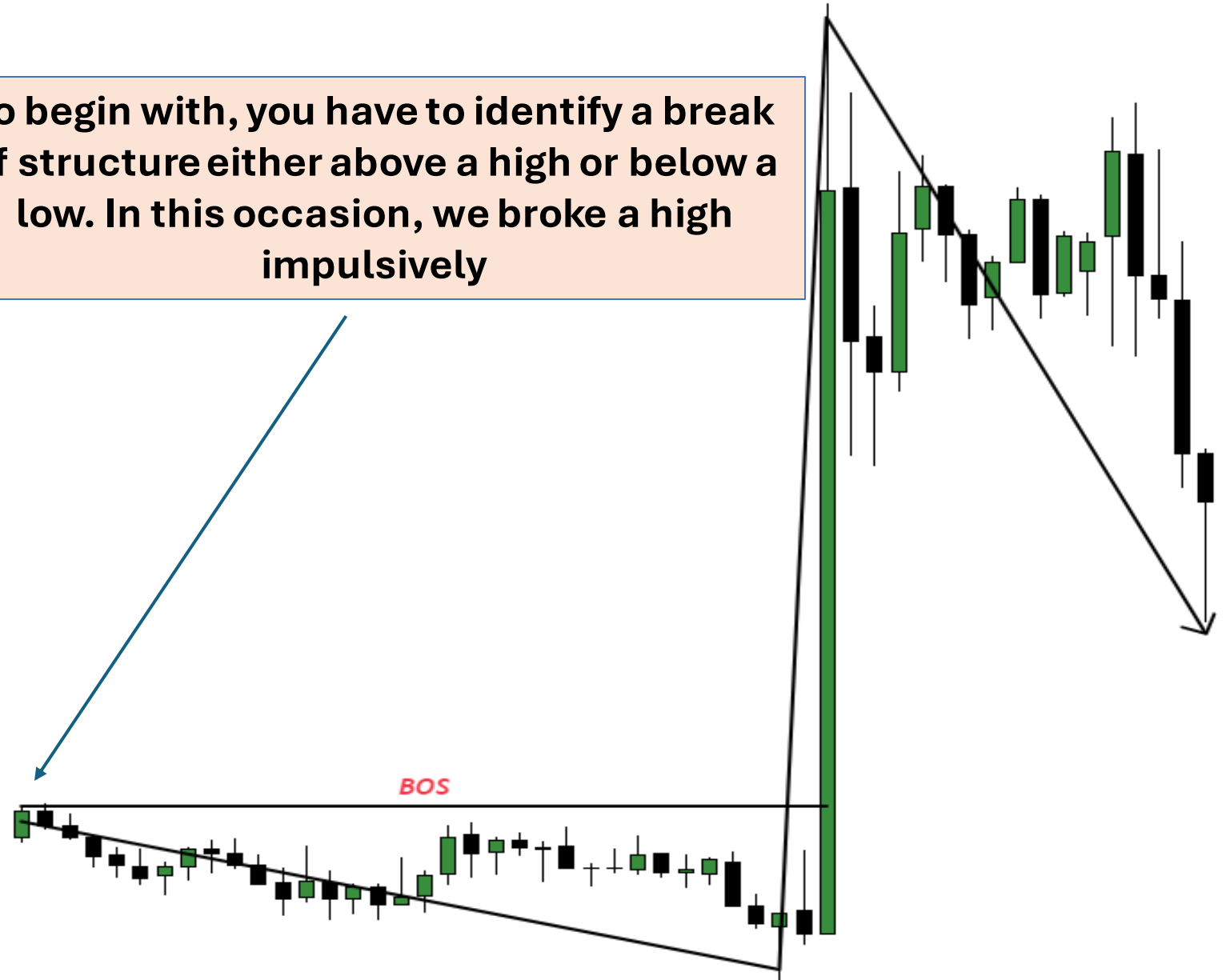
# **5min FVG With 1min Entry**

**Get Funded With 6 Figures!!!**

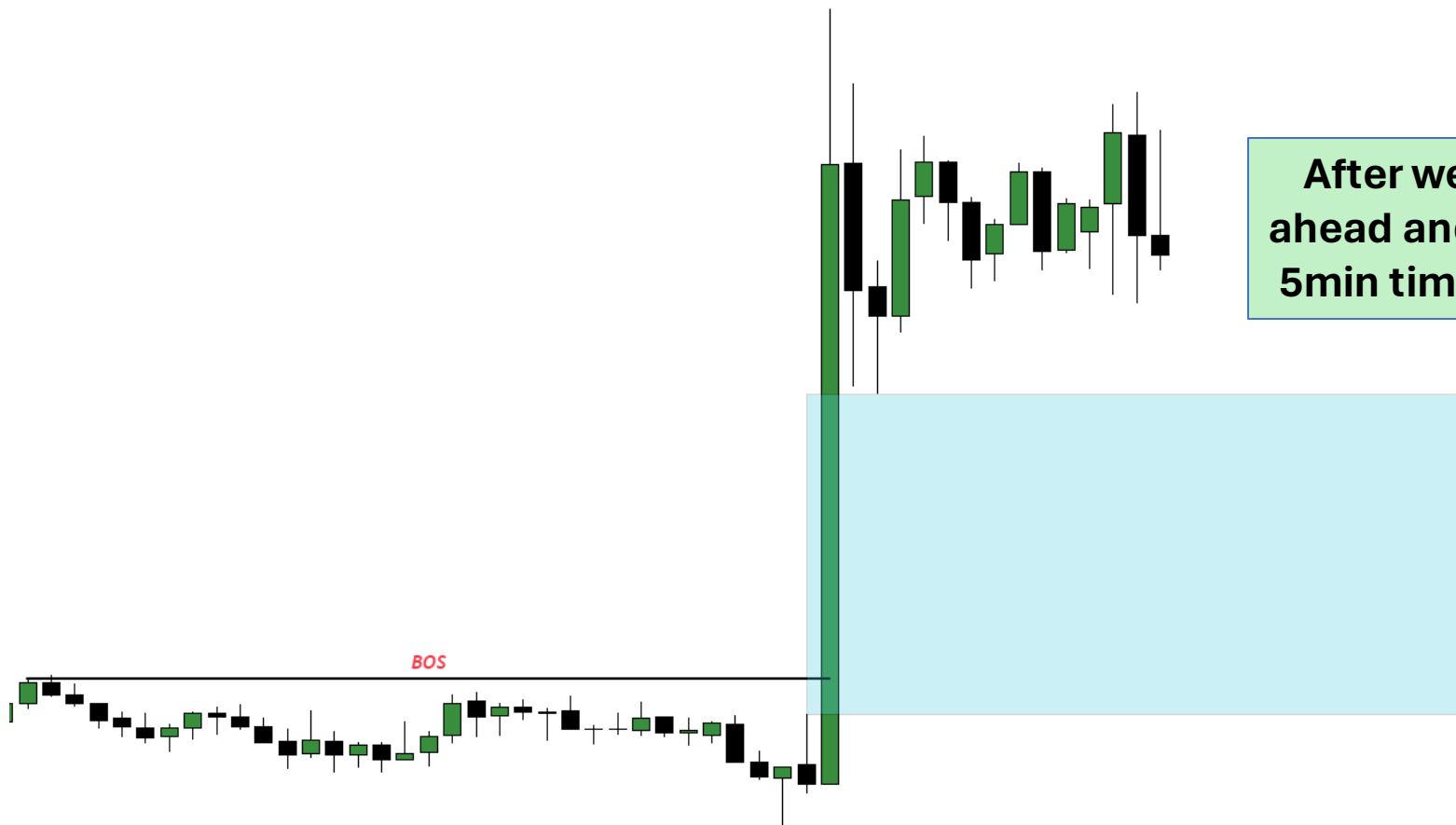


# Introduction To The Strategy

To begin with, you have to identify a break of structure either above a high or below a low. In this occasion, we broke a high impulsively

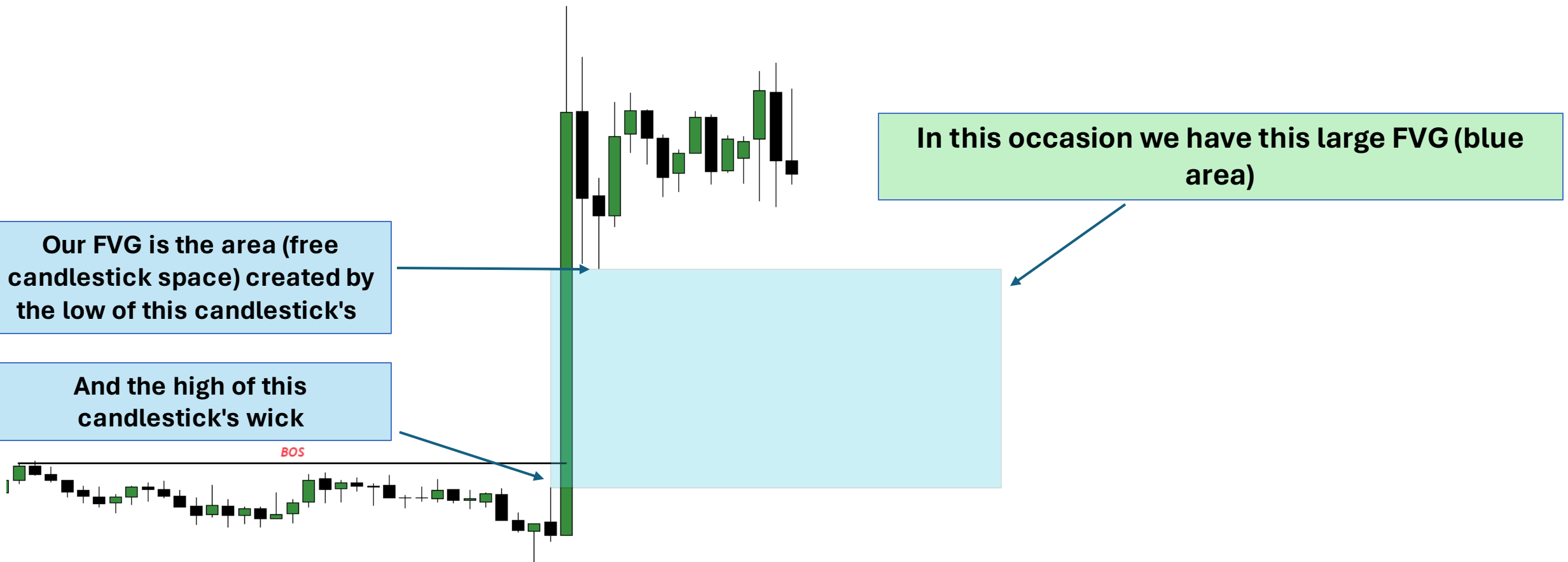


# Identifying The 5min FVG (Example 1)



After we have identified our BOS, then we go ahead and check out if we have any FVGs on the 5min time frame (no matter how large they are)

# Identifying The 5min FVG (Example 1)

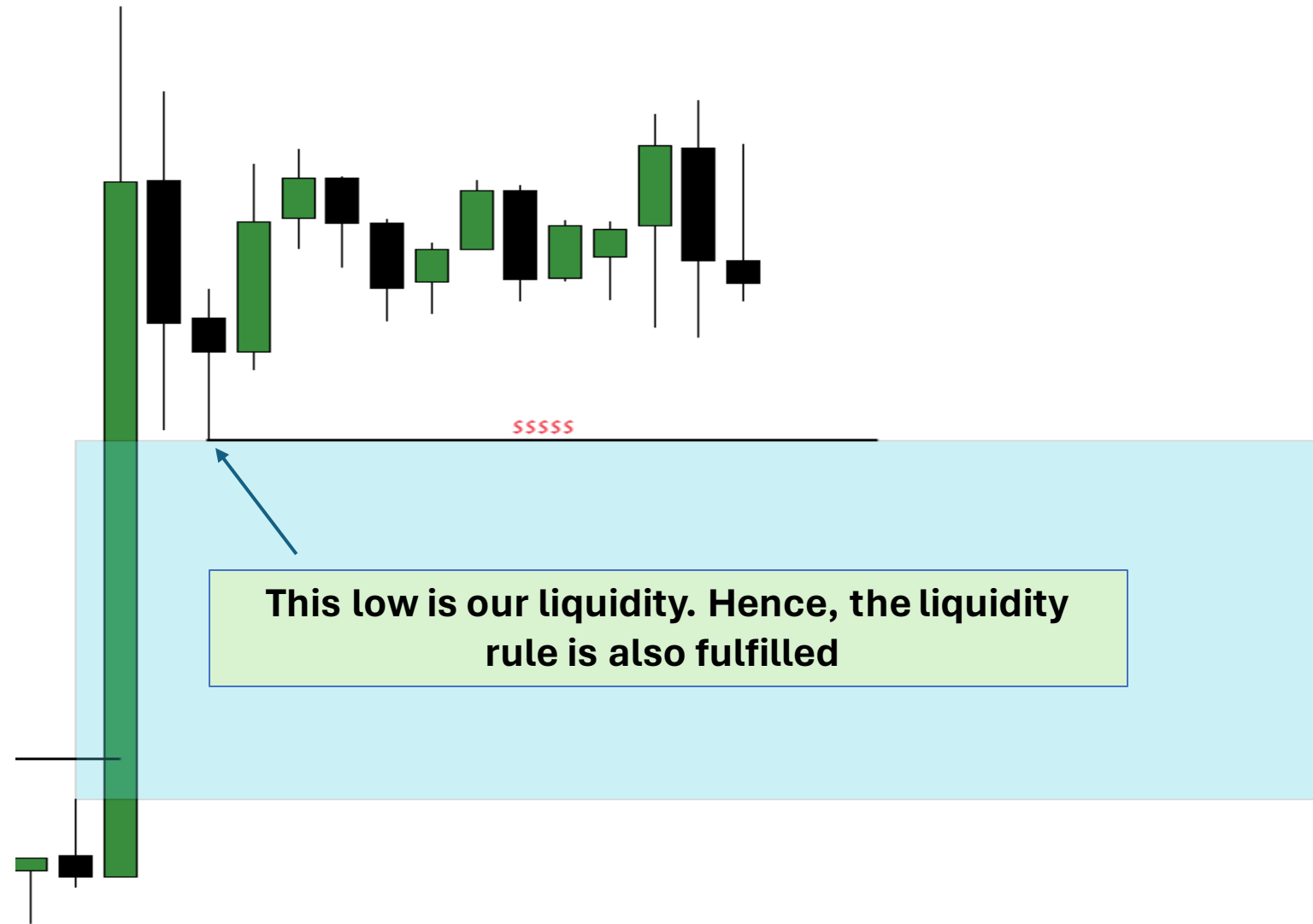


# Identifying 5min TF Liquidity (Example 1)

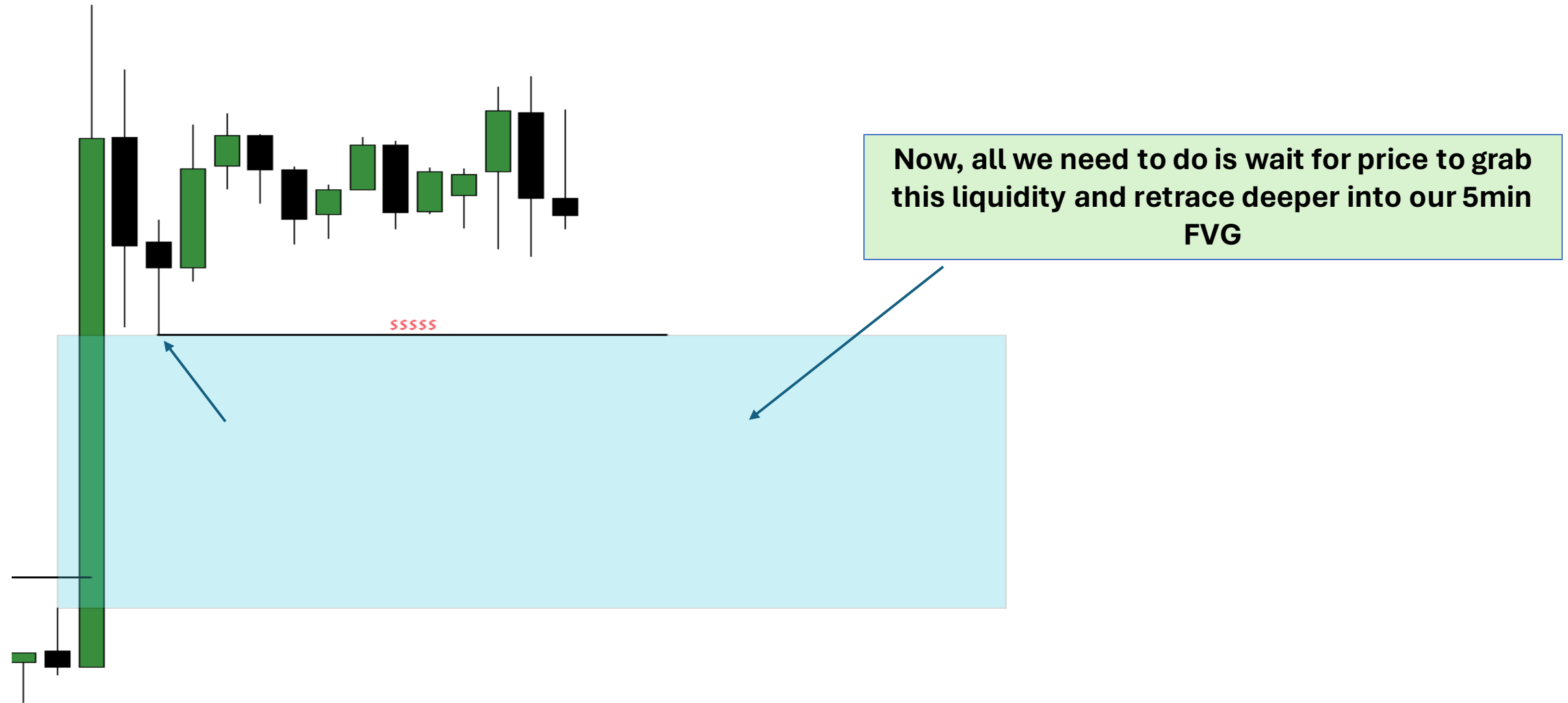


**It is important that we identify some form of liquidity on the 5min tf above our 5min FVG!!!**

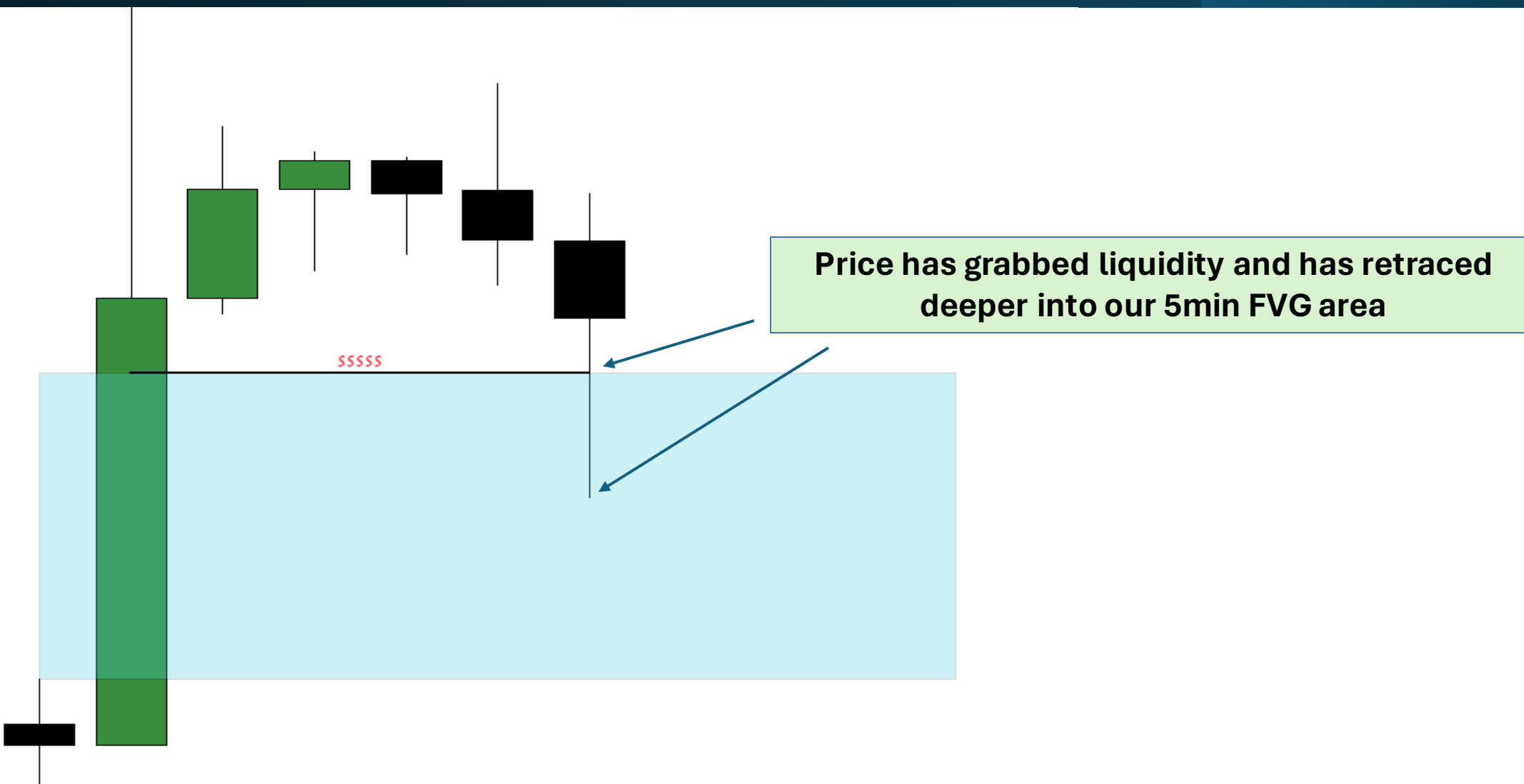
# Identifying 5min TF Liquidity (Example 1)



# Identifying 5min TF Liquidity (Example 1)

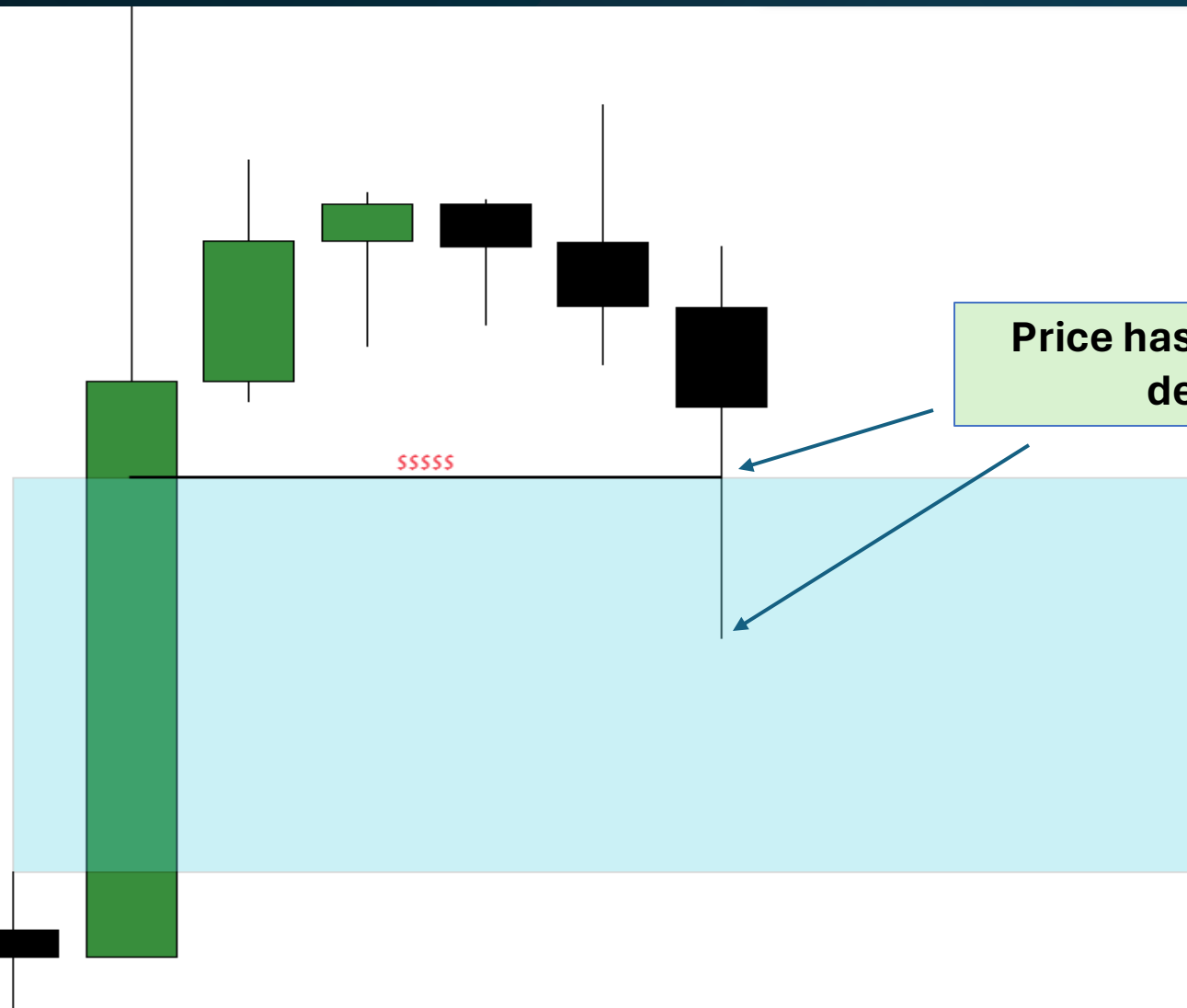


# Waiting For Price To Retrace Into The FVG (Example 1)





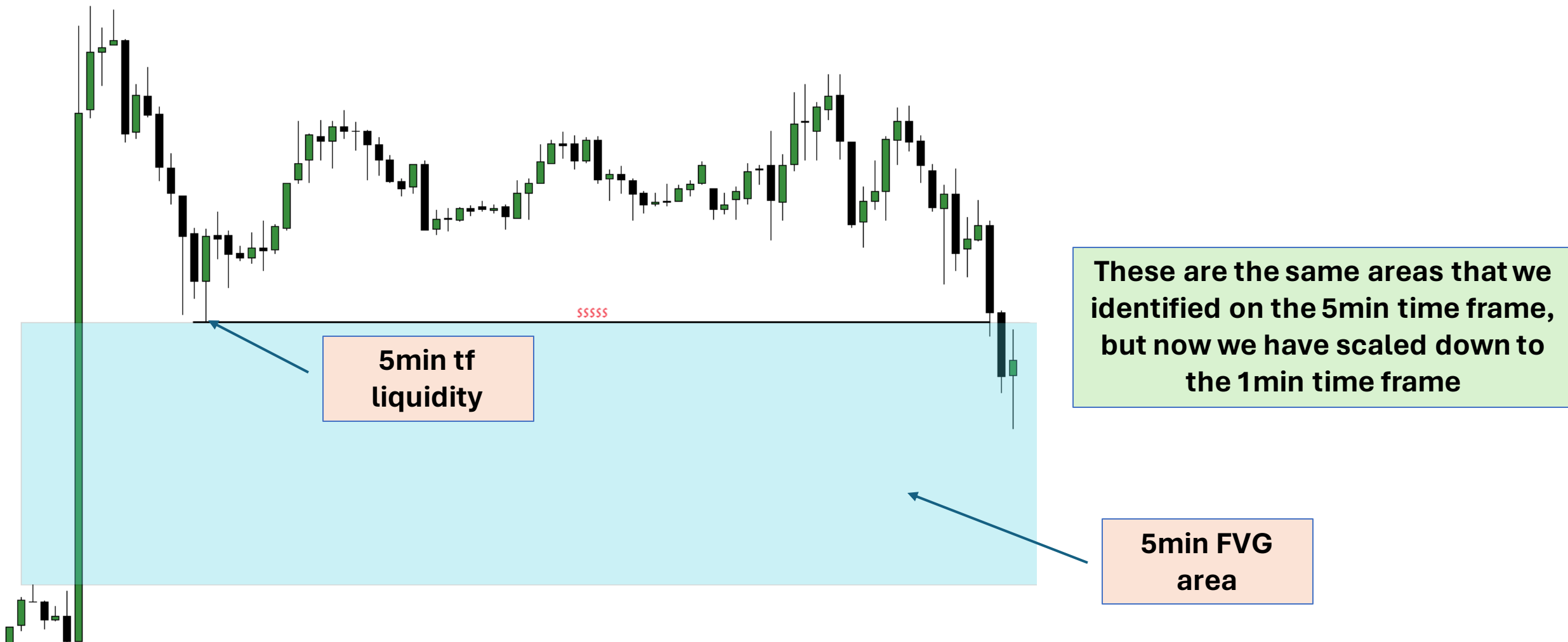
# Waiting For Price To Retrace Into The FVG (Example 1)



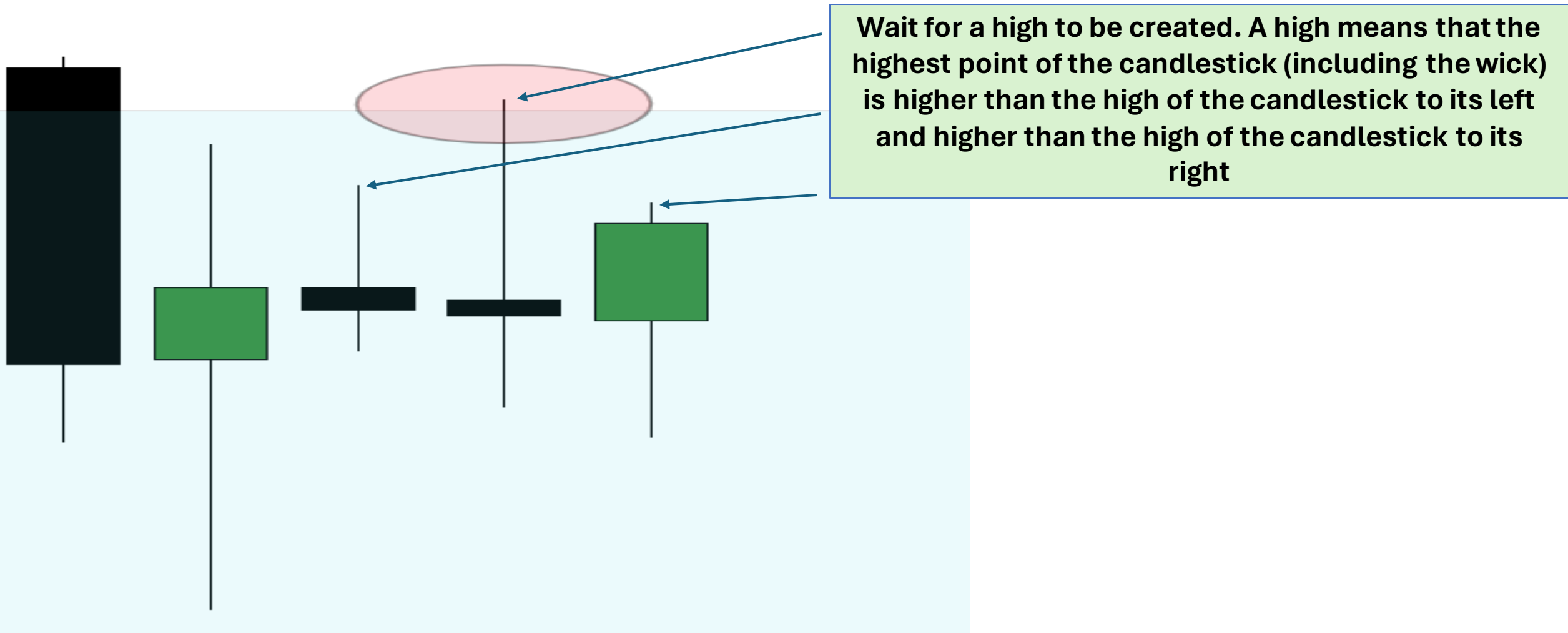
**Price has grabbed liquidity and has retraced deeper into our 5min FVG area**

**There is no specific rule as to how deep price should retrace into our FVG!**

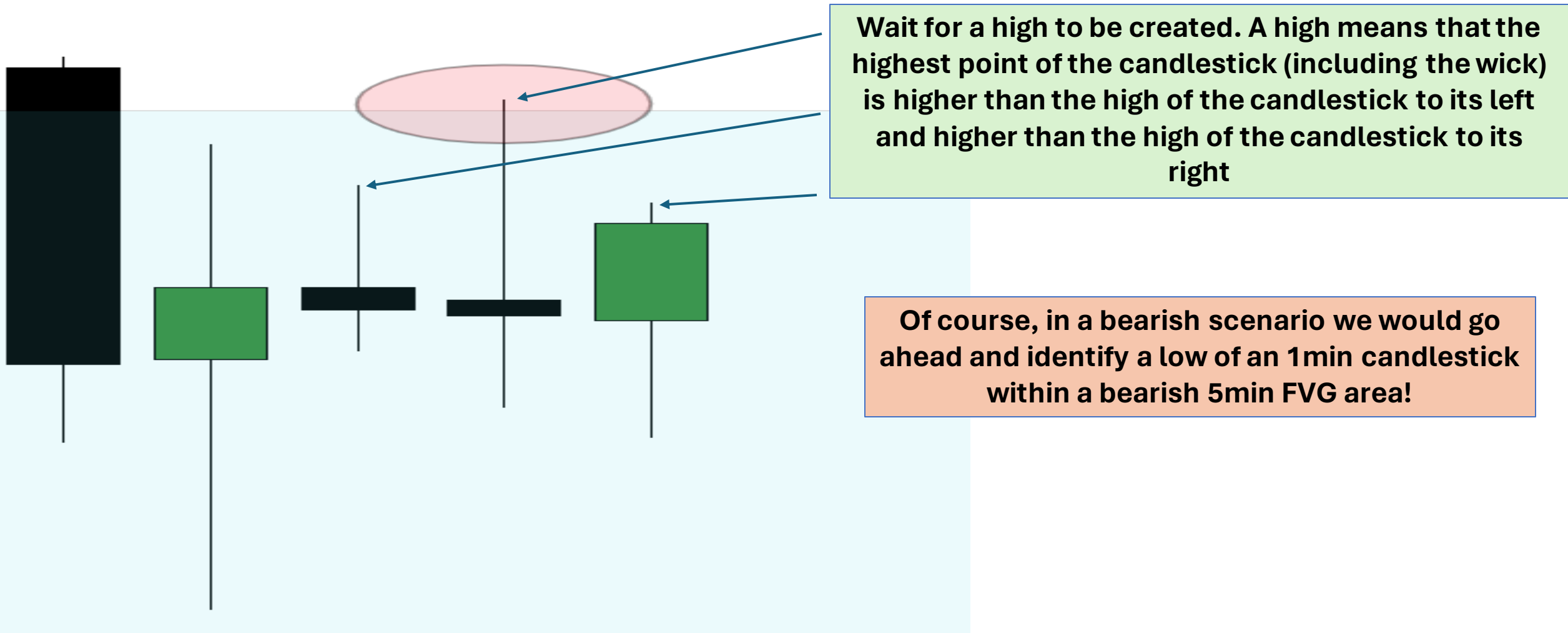
# Scaling Down To The 1min TF (Example 1)



# 1min TF Entry Rules (Example 1)



# 1min TF Entry Rules (Example 1)

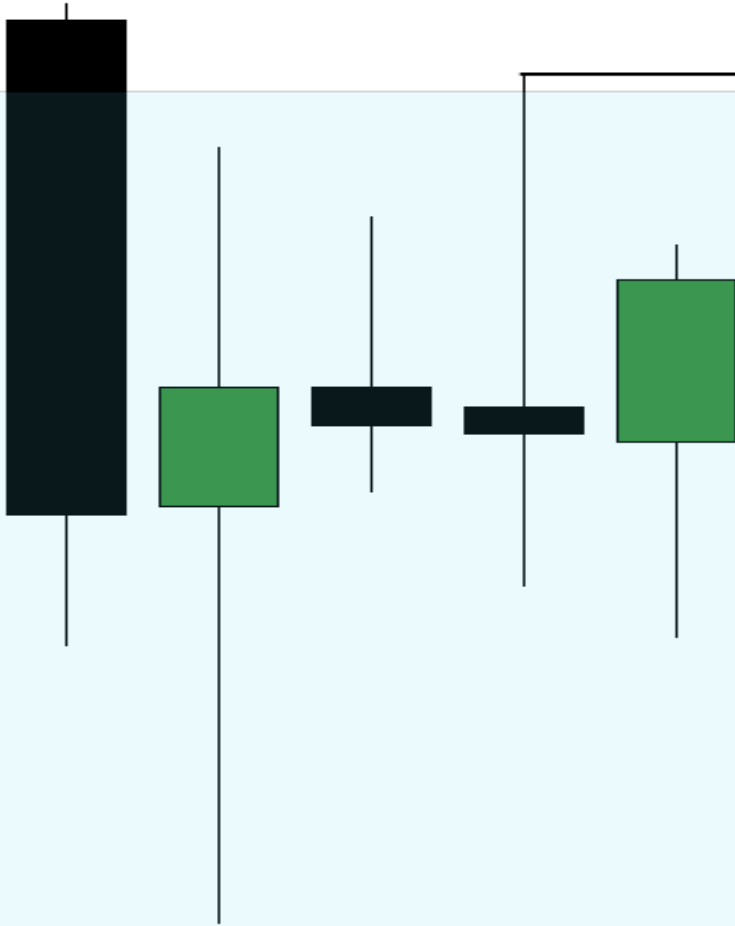


# 1min TF Entry Rules (Example 1)



**We will just wait of a break of  
this high with a body of an 1min  
candlestick**

# 1min TF Entry Rules (Example 1)

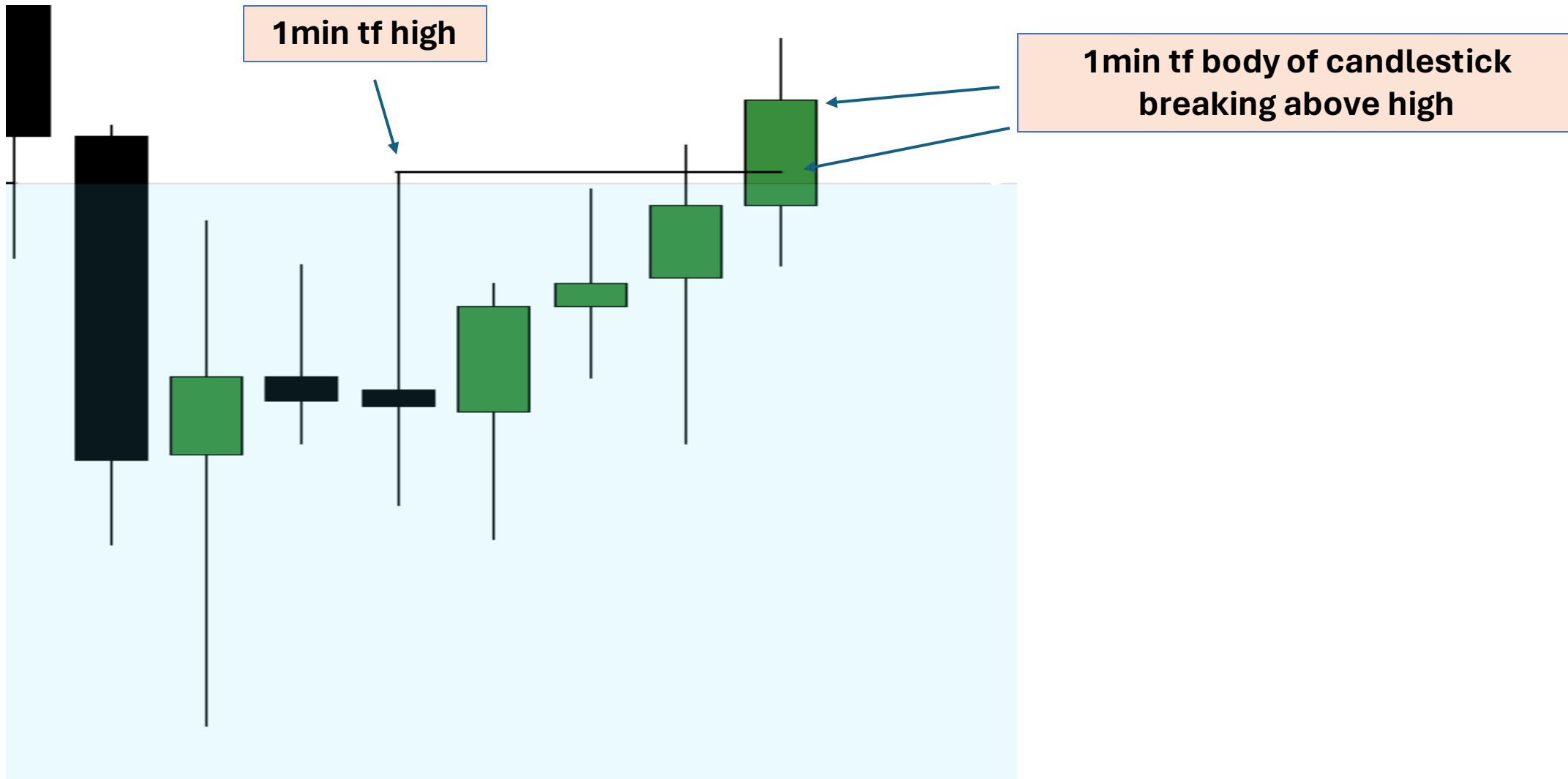


We will just wait of a break of this high with a body of an 1min candlestick

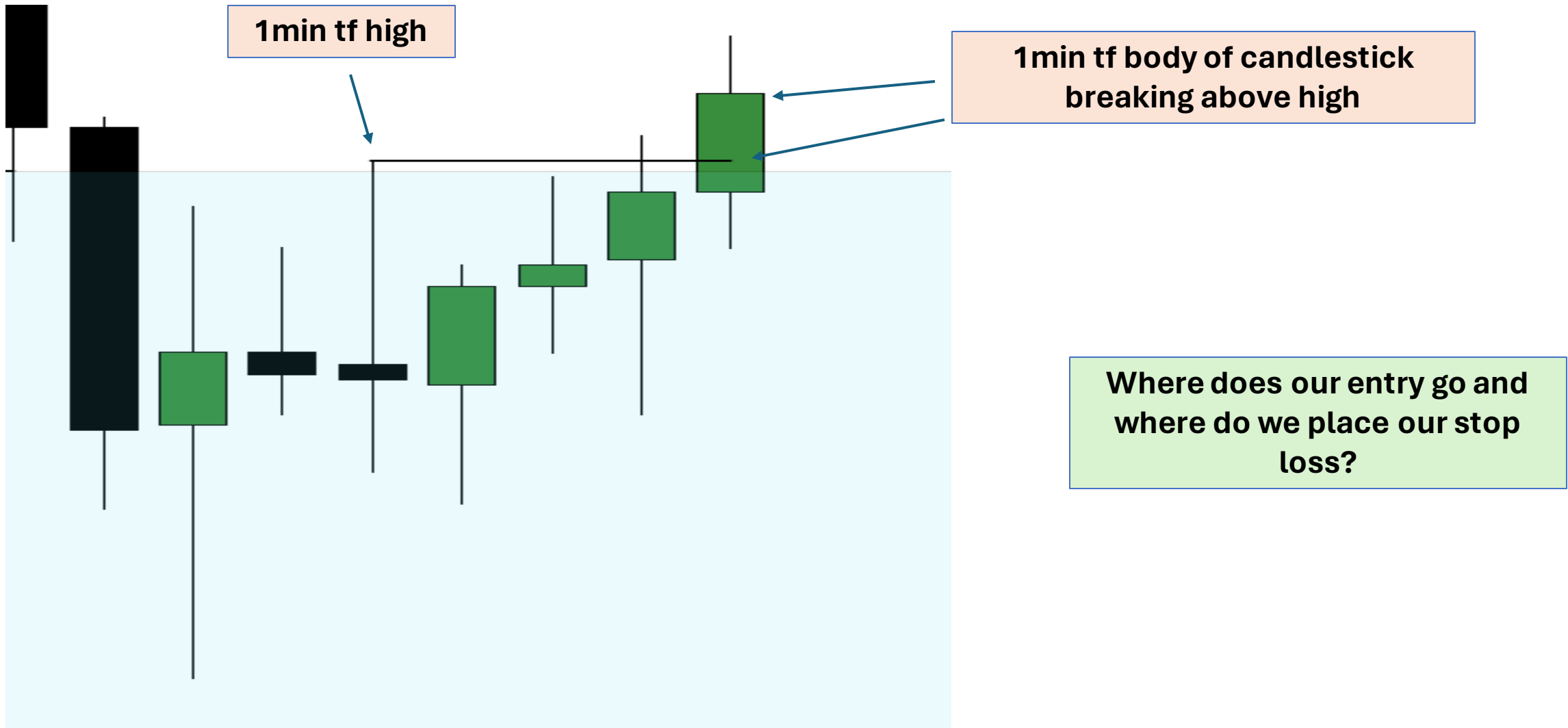
## IMPORTANT!!!

The body that breaks above this high does NOT need to be the first candlestick that breaks above as you will see in the next slides

# 1min TF Entry Rules (Example 1)



# 1min TF Entry Rules (Example 1)





# 1min TF Entry Rules (Example 1)

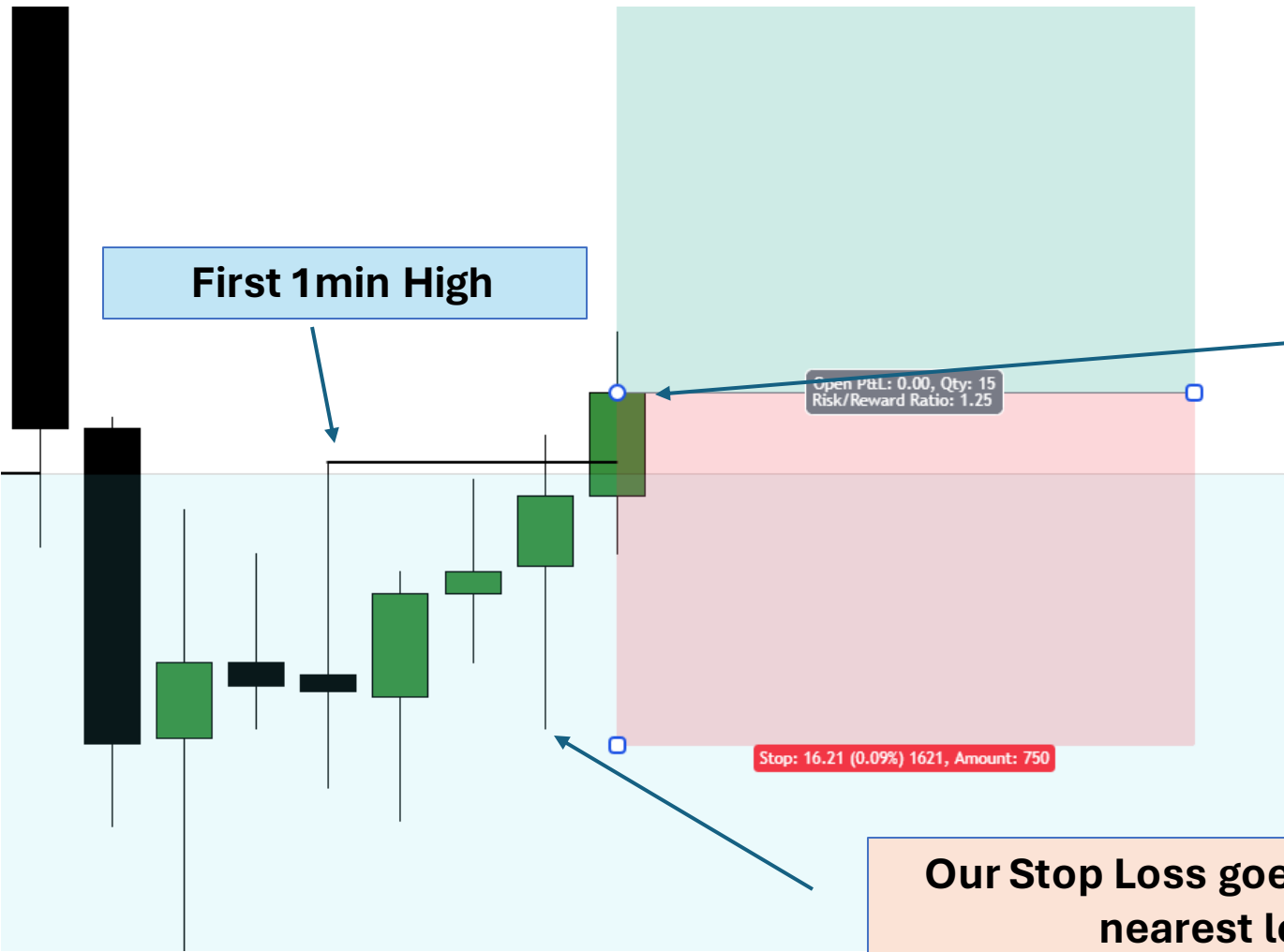
First 1min High

We enter with a market execution once the first 1min high is broken by a body of a candlestick

Open P&L: 0.00, Qty: 15  
Risk/Reward Ratio: 1.25

Stop: 16.21 (0.09%) 1621, Amount: 750

Our Stop Loss goes below the nearest low!

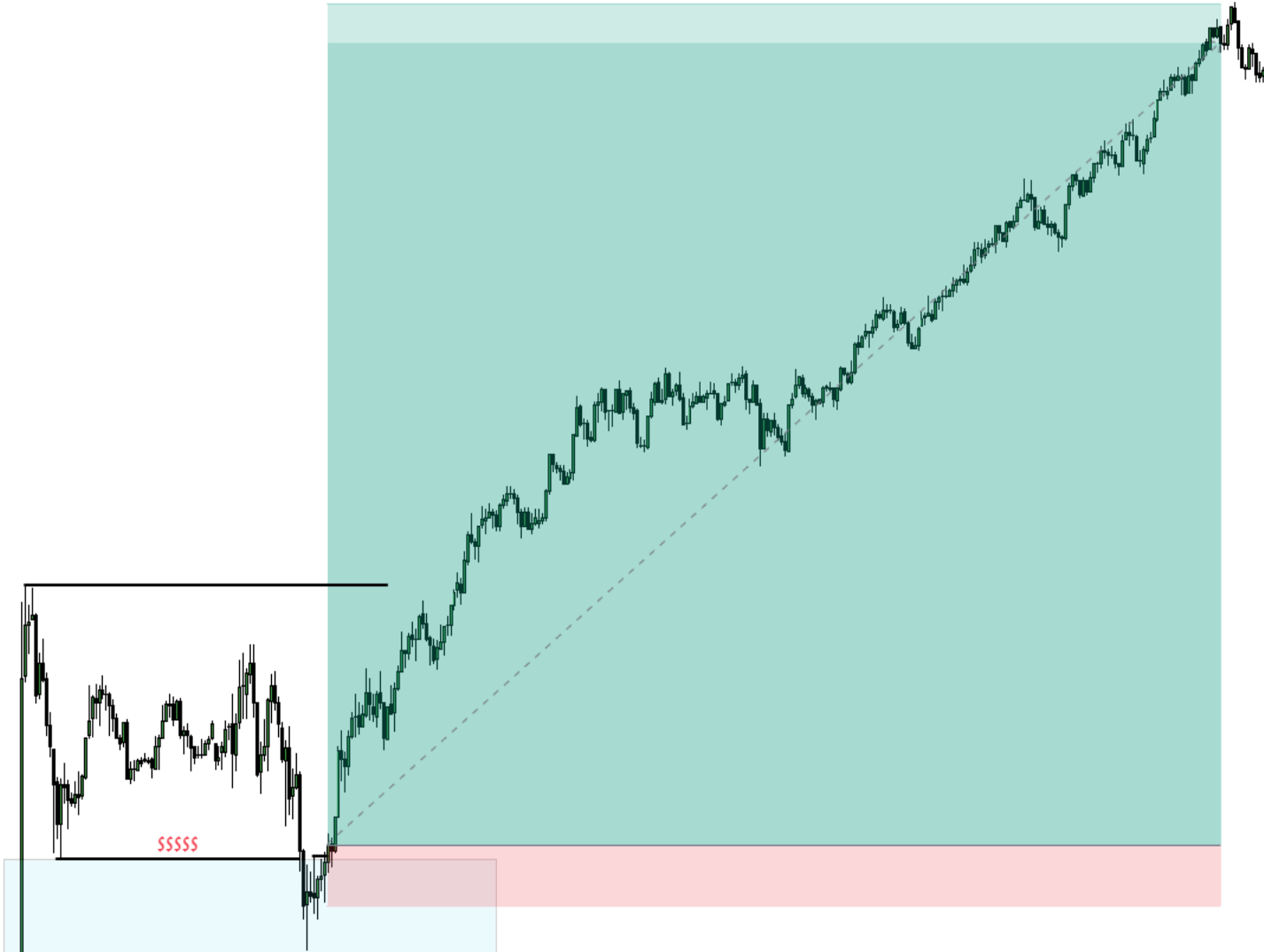


# 1min TF Entry Rules (Example 1)



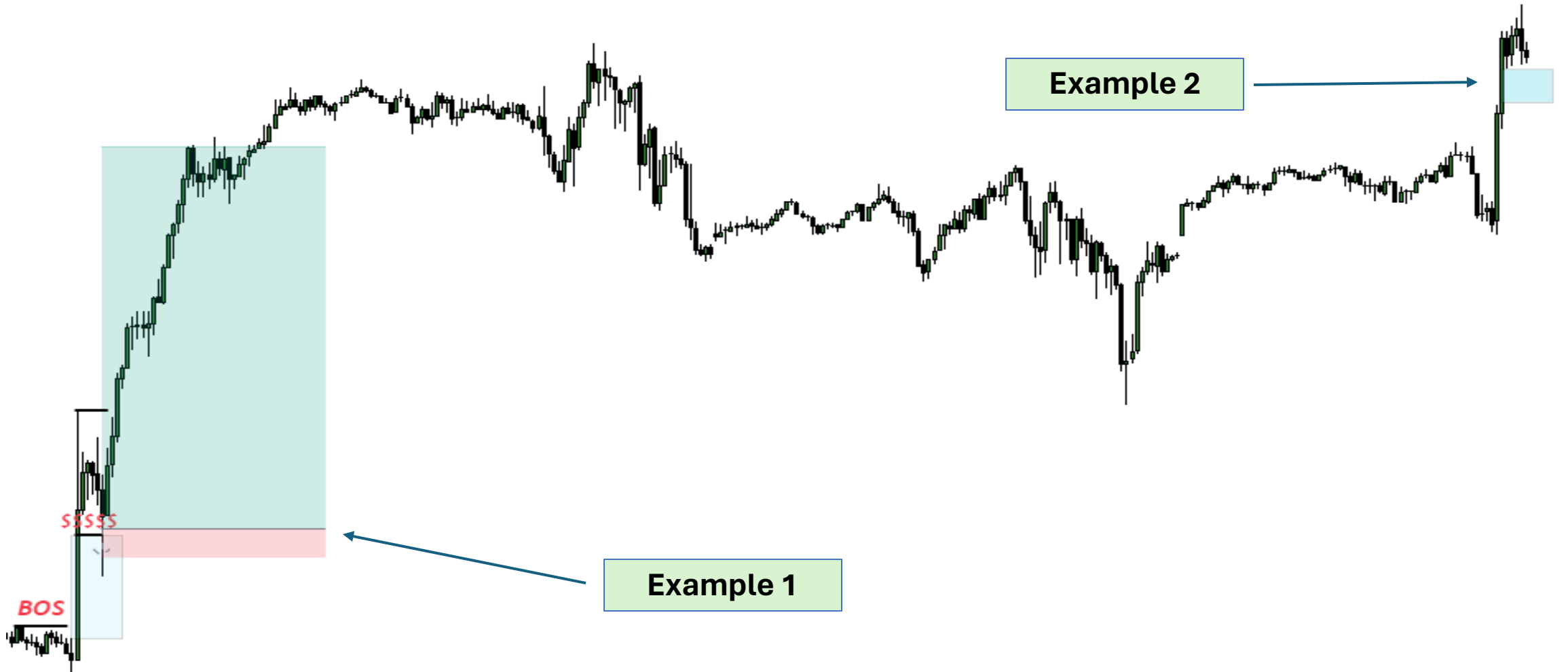
**For Take Profit, we target liquidity  
(swing highs of the 1min) or even  
higher! This is TOTALLY up to your  
backtesting!!!**

# 1min TF Entry Rules (Example 1)

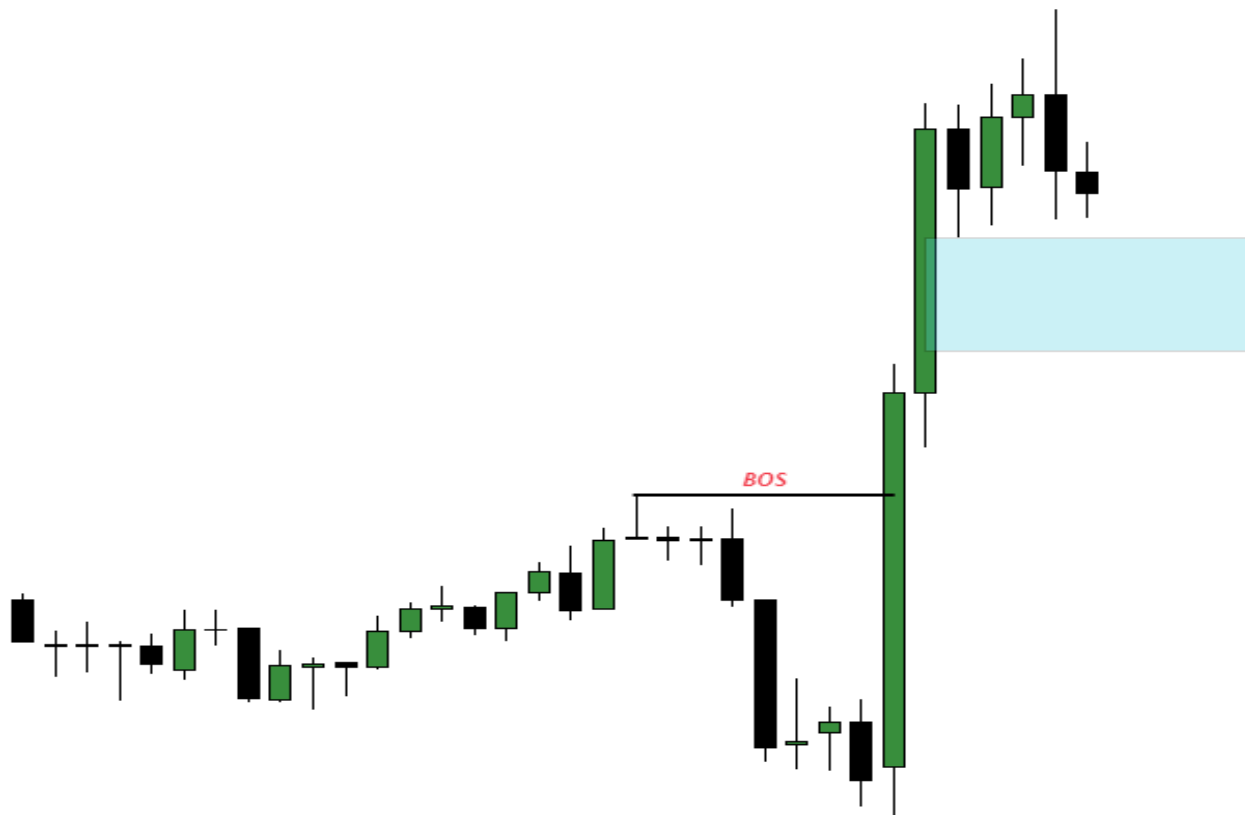


**This trade with the entry I showed you  
went for WAY MORE than a 10/1 RR!!!**

# 5min TF (Example 2)

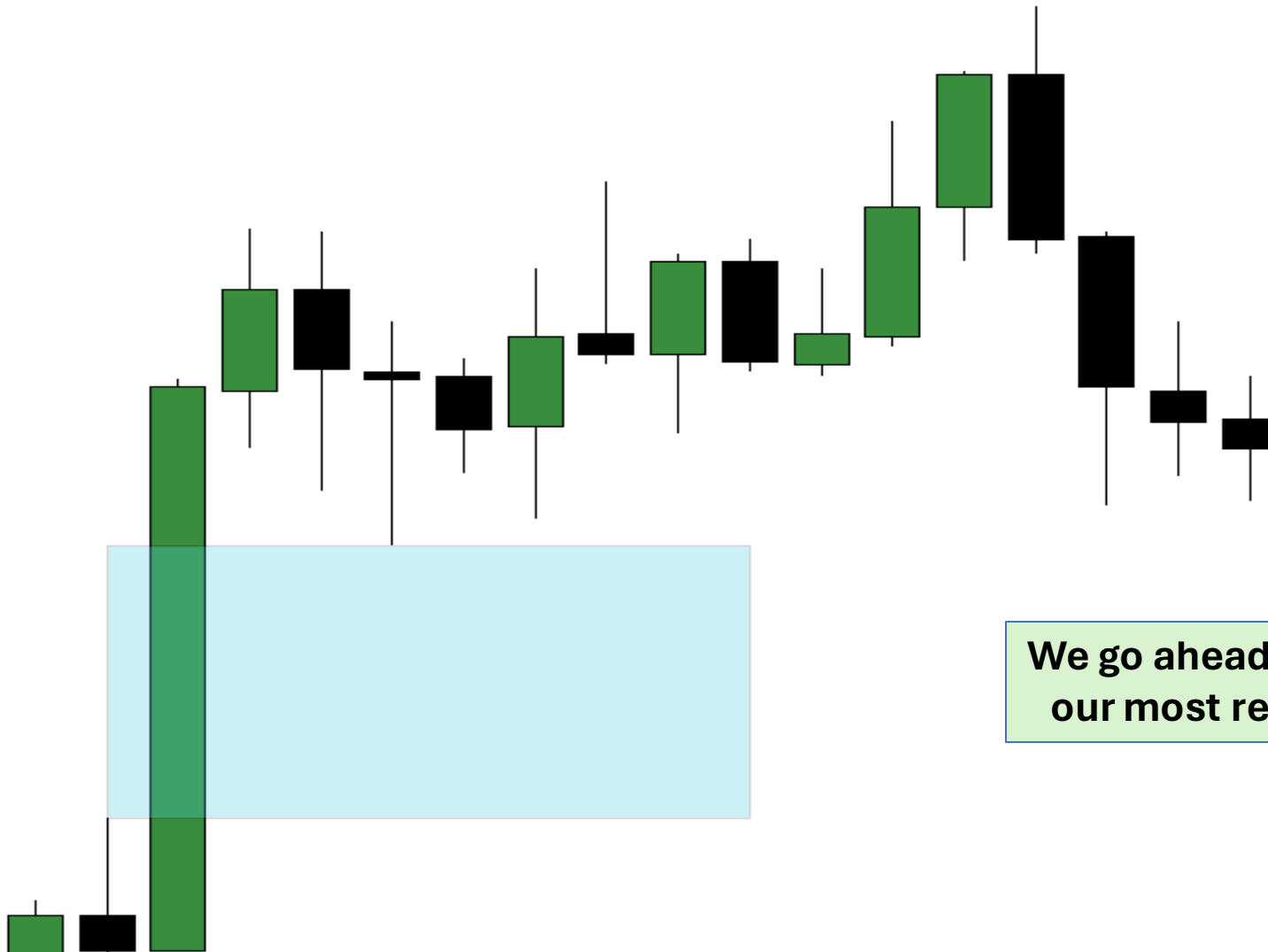


# 5min BOS (Example 2)



**Our first rule is a move that  
breaks structure and leaves  
FVGs**

# 5min TF FVG (Example 2)

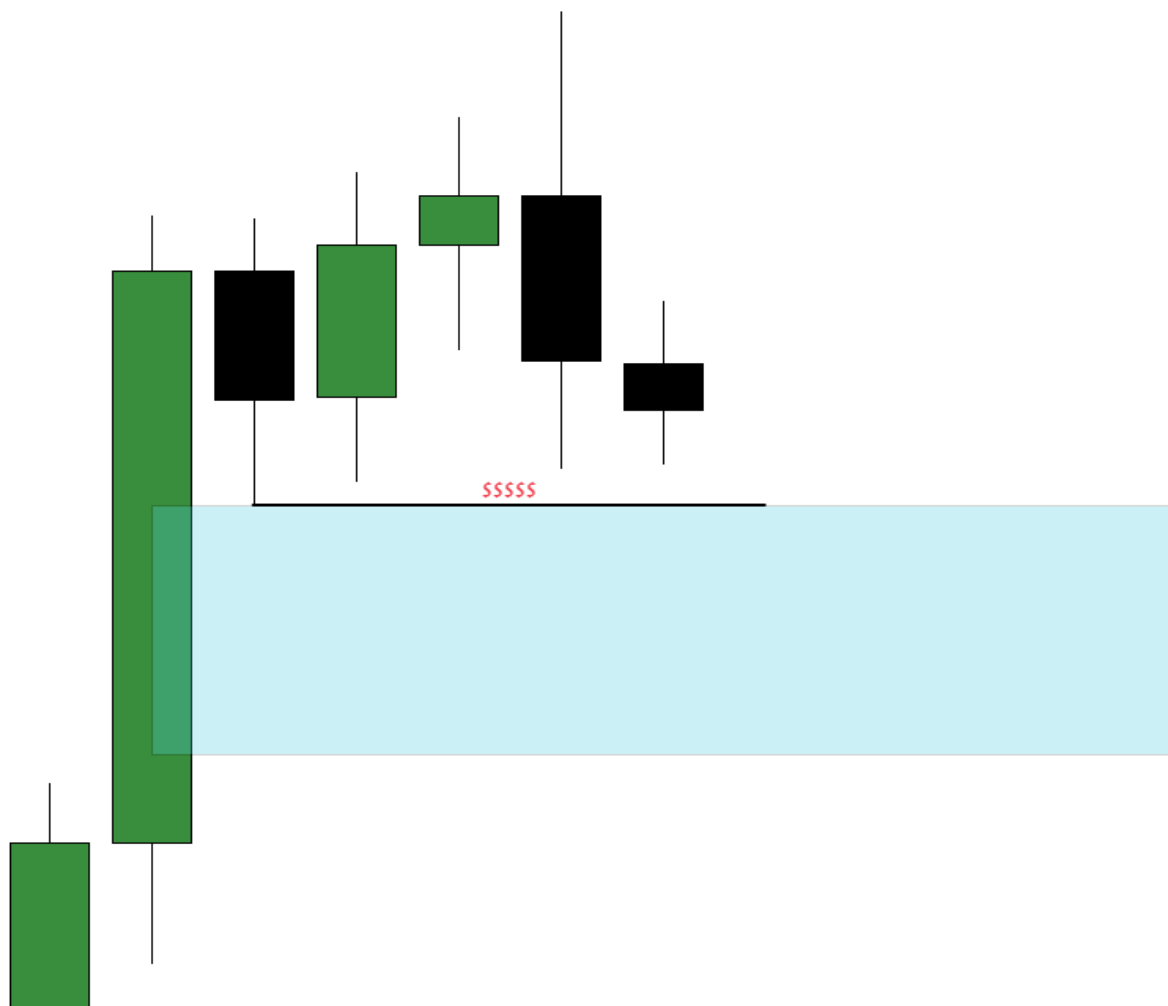


We go ahead and we identify  
our most recent 5min FVG

# 5min TF FVG (Example 2)



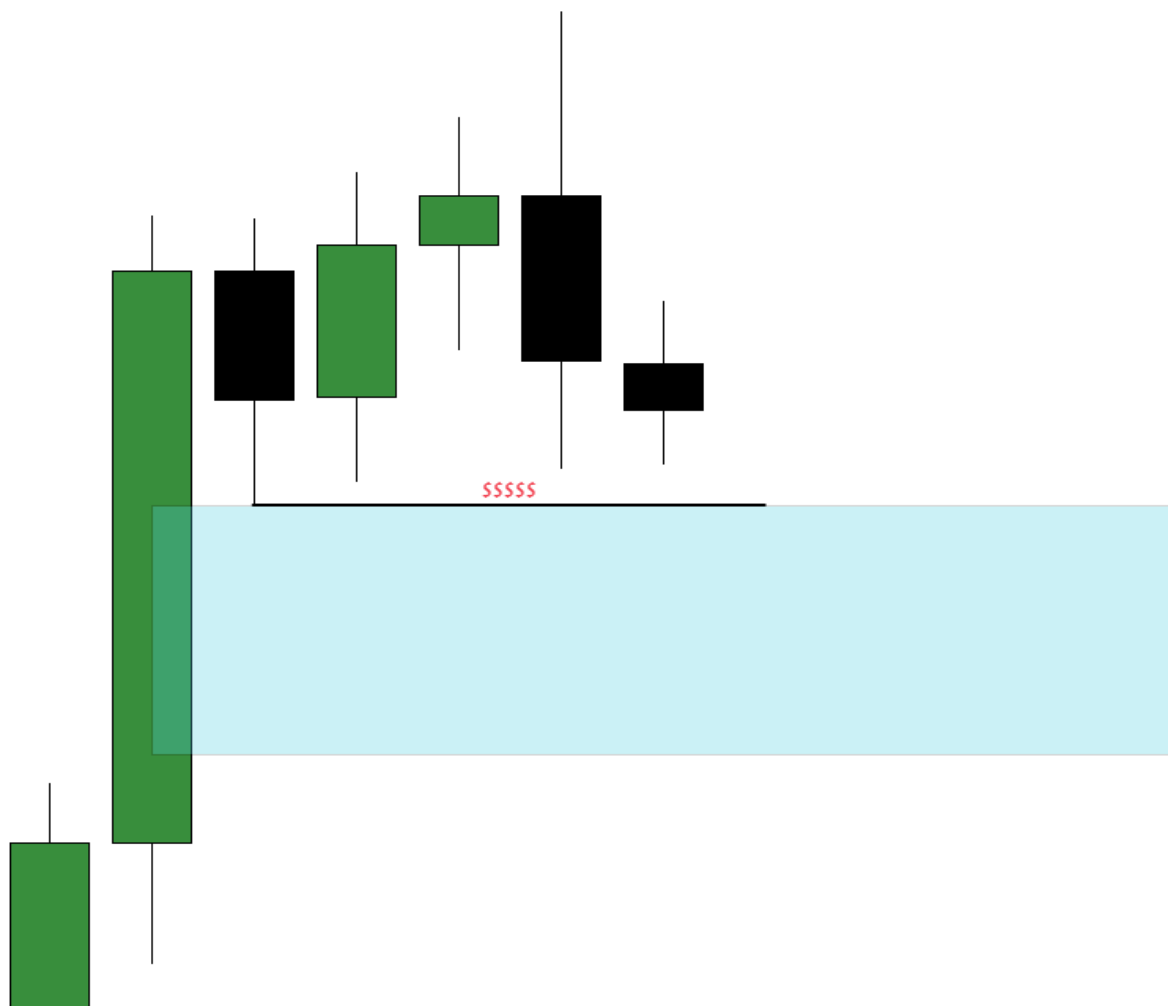
# 5min TF Liquidity (Example 2)



**Then we identify some form of liquidity on the 5min time frame**



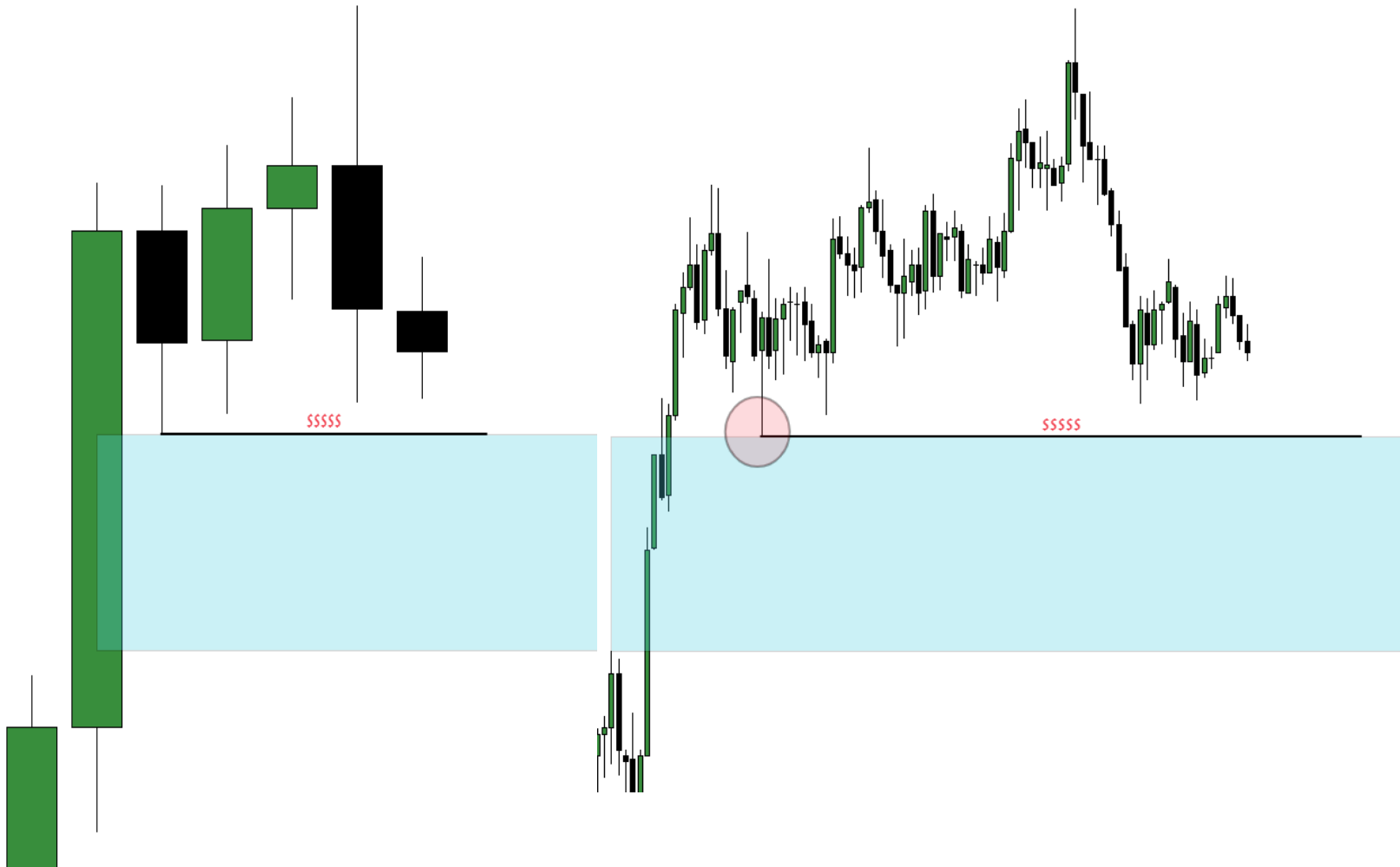
# 5min TF Liquidity (Example 2)



**Then we identify some form of liquidity on the 5min time frame**

**But WAIT!! This is not a proper low on the 5min time frame!**

# 5min TF and 1min TF Liquidity (Example 2)



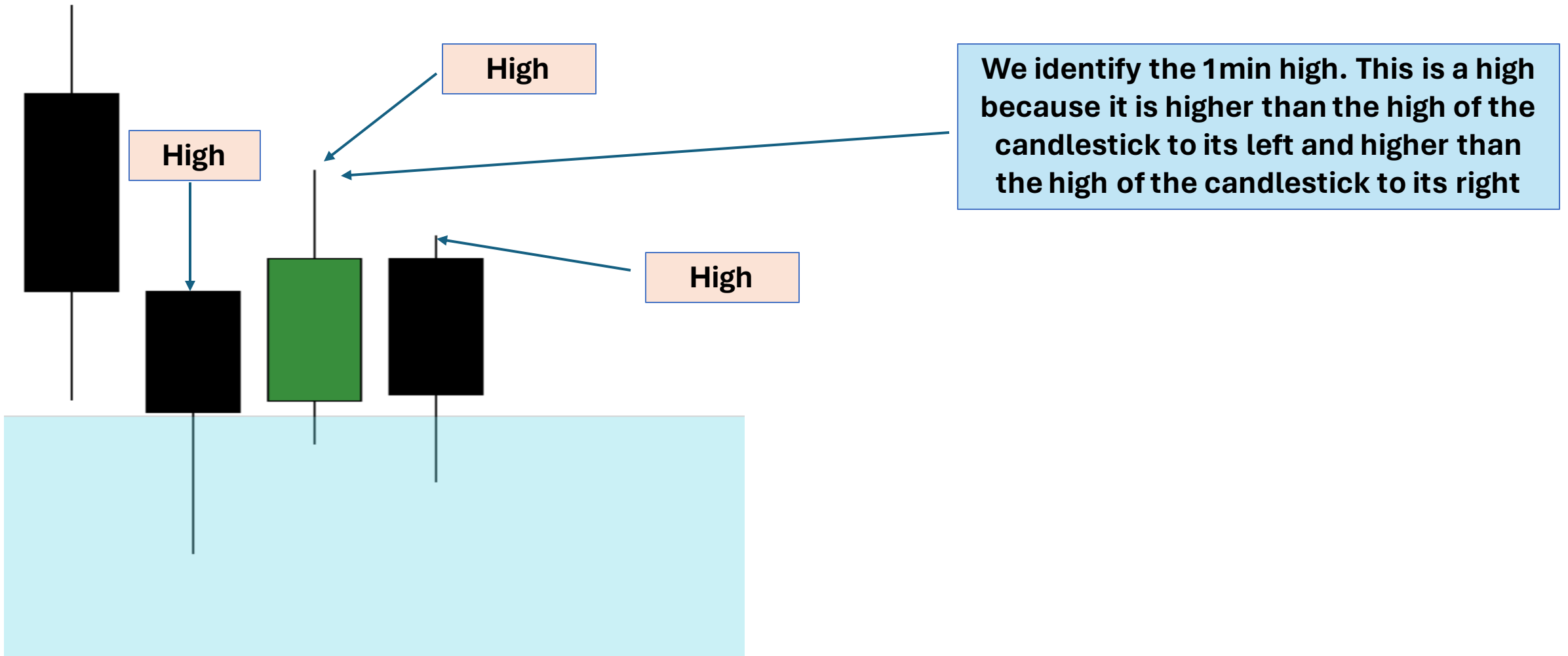
**Look at the very same area on the 1 minute time frame! It is STILL valid as a trade even though the liquidity is not as significant as in the 5min!**

# 1min TF Liquidity Grab (Example 2)

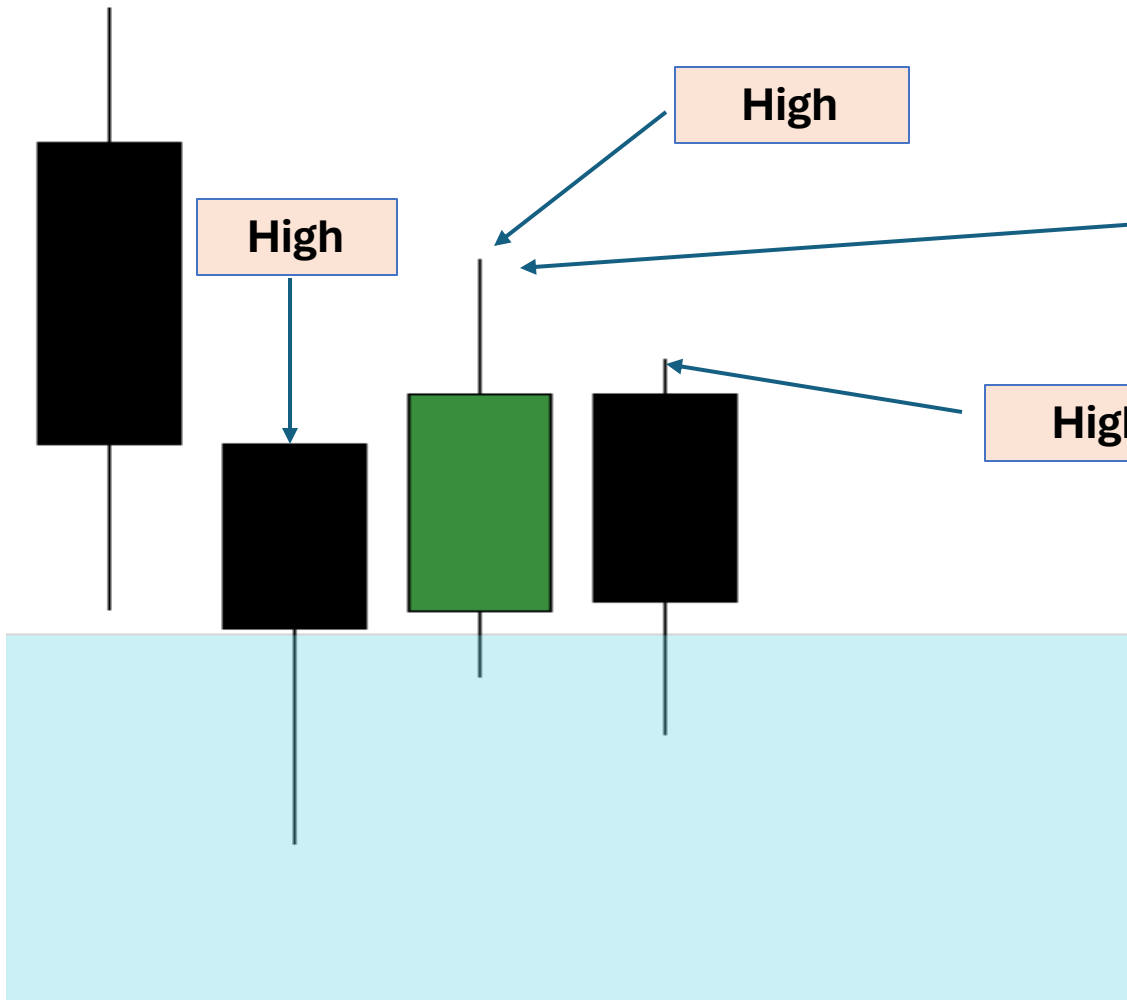


Liquidity was grabbed on the 1min time frame! We further tapped deeper into our FVG area!

# 1min TF Identify The High (Example 2)



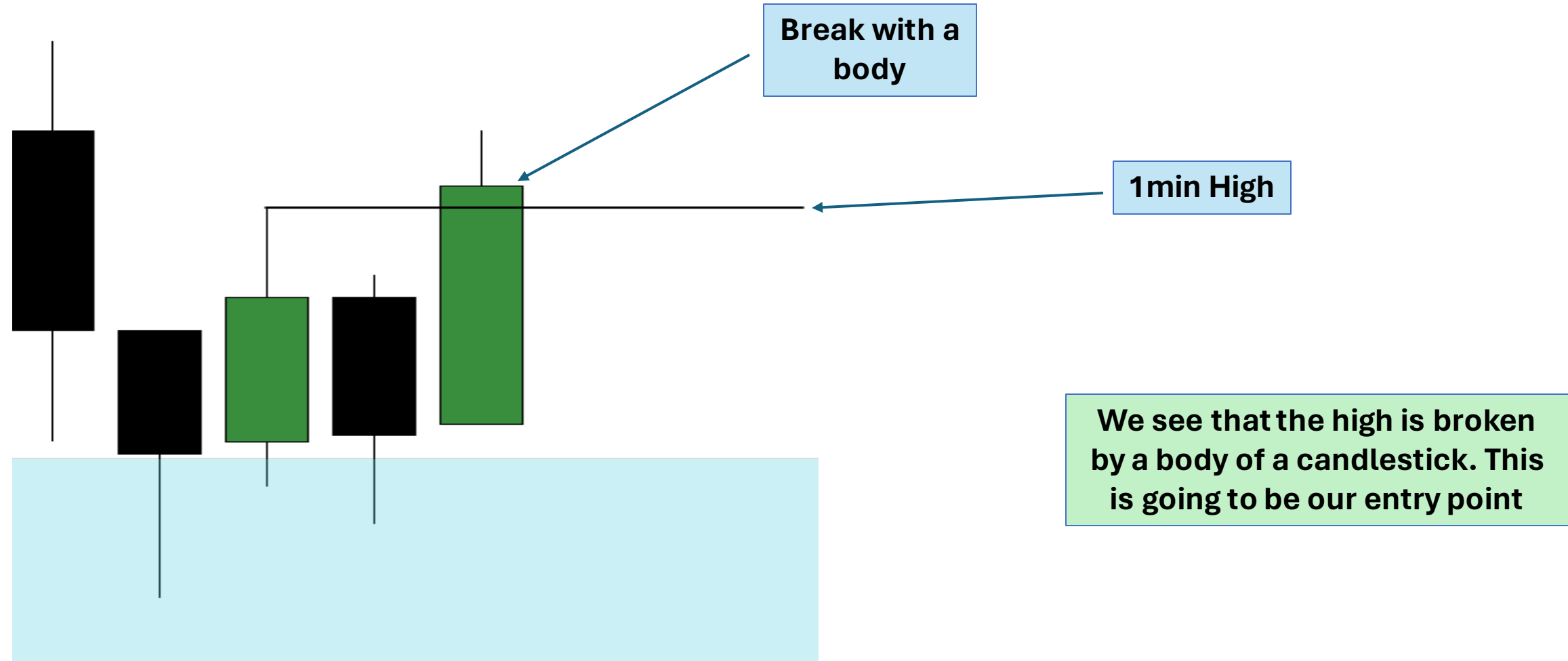
# 1min TF Identify The High (Example 2)



We identify the 1min high. This is a high because it is higher than the high of the candlestick to its left and higher than the high of the candlestick to its right

We now wait for the high to be broken by a body of an 1min candlestick

# 1min TF Break Of The High (Example 2)



# 1min TF Entry And SL (Example 2)

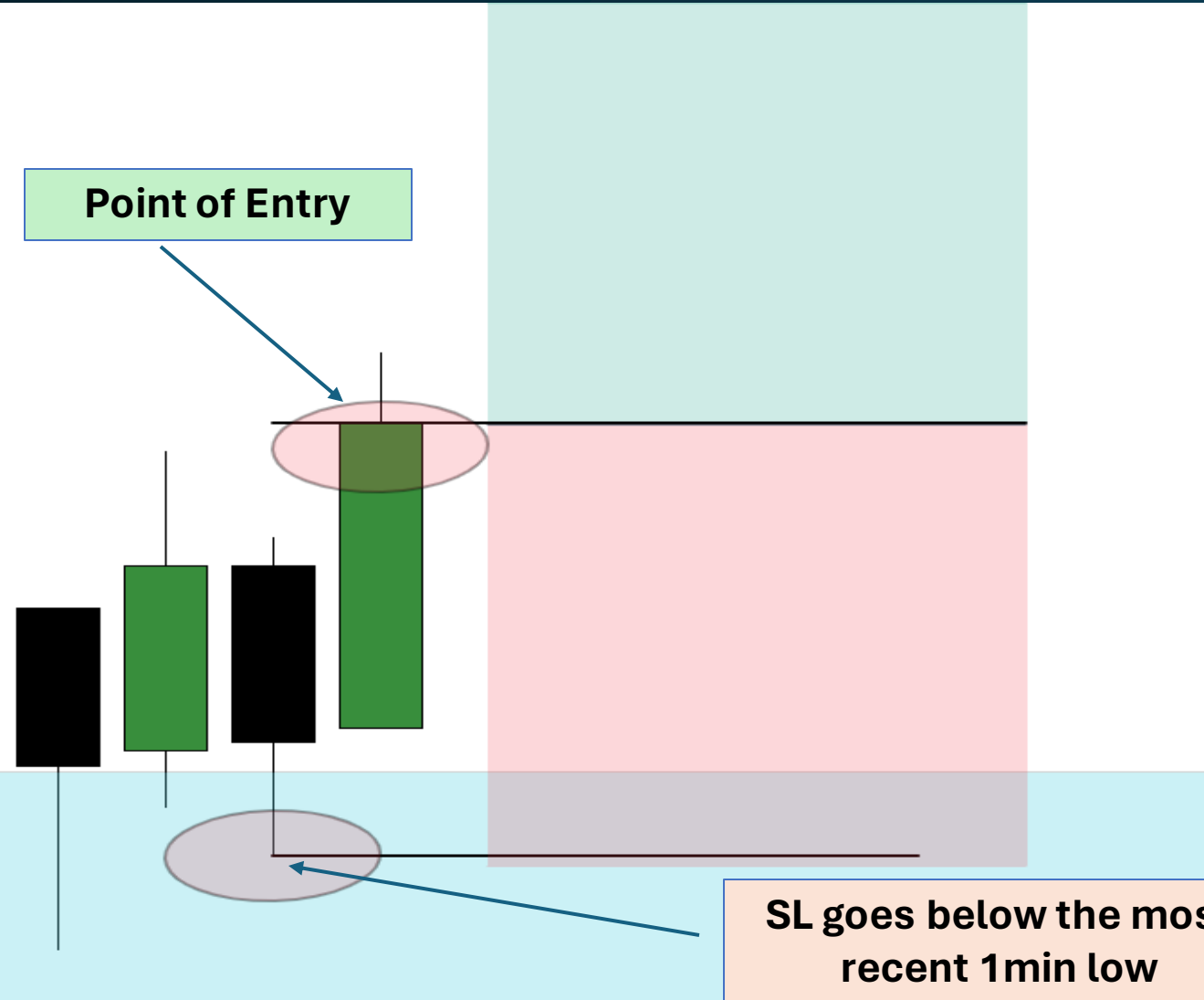
Point of Entry

We place our entry with a market execution exactly at the break of the high with an 1min candlestick body

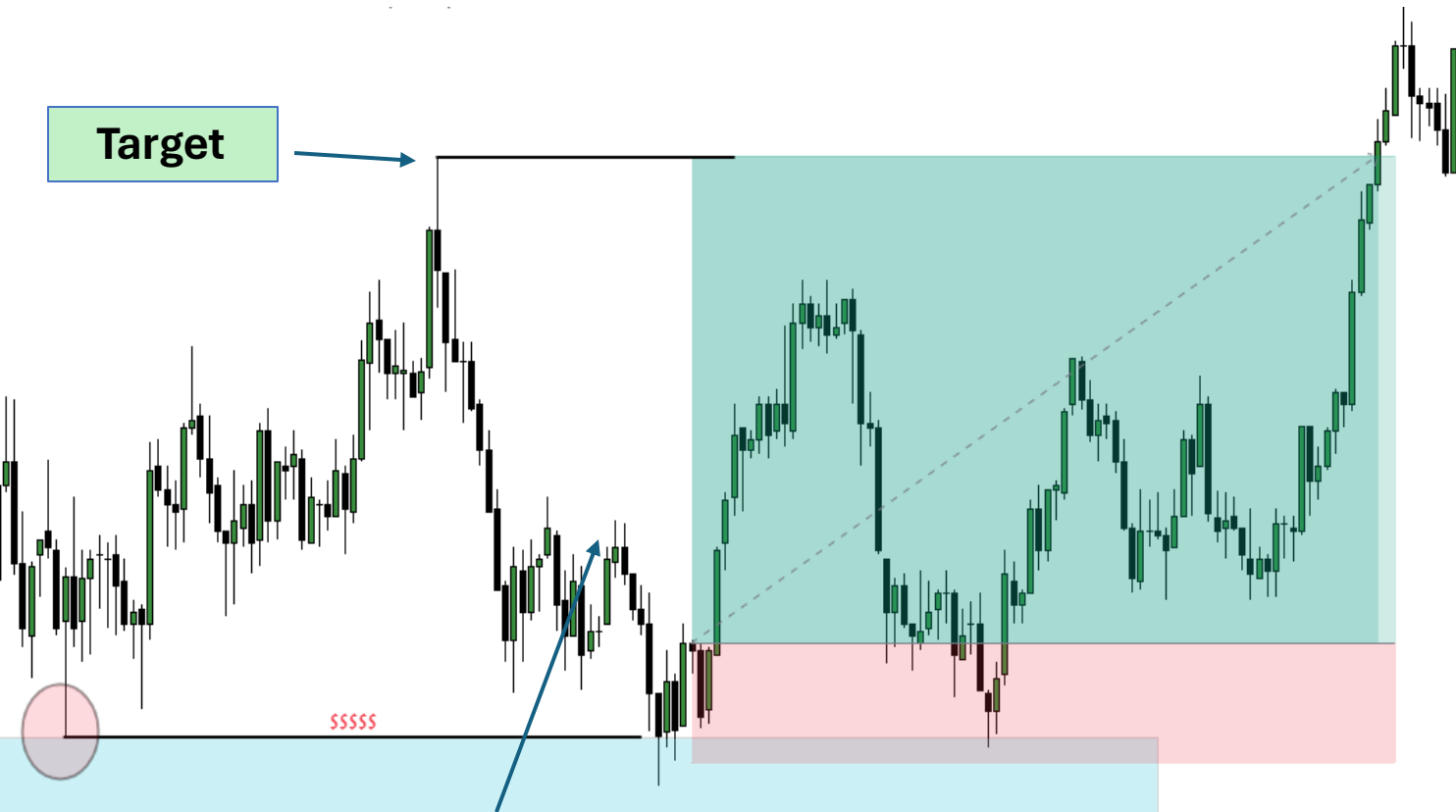
We place our stop loss at the most recent 1min low. NOT the lowest low but the most recent one!!!

We target points of liquidity of the 5min time frame or even from a higher time frame. This is UP TO YOU!!!

SL goes below the most recent 1min low



# 1min TF Entry SL And TP (Example 2)

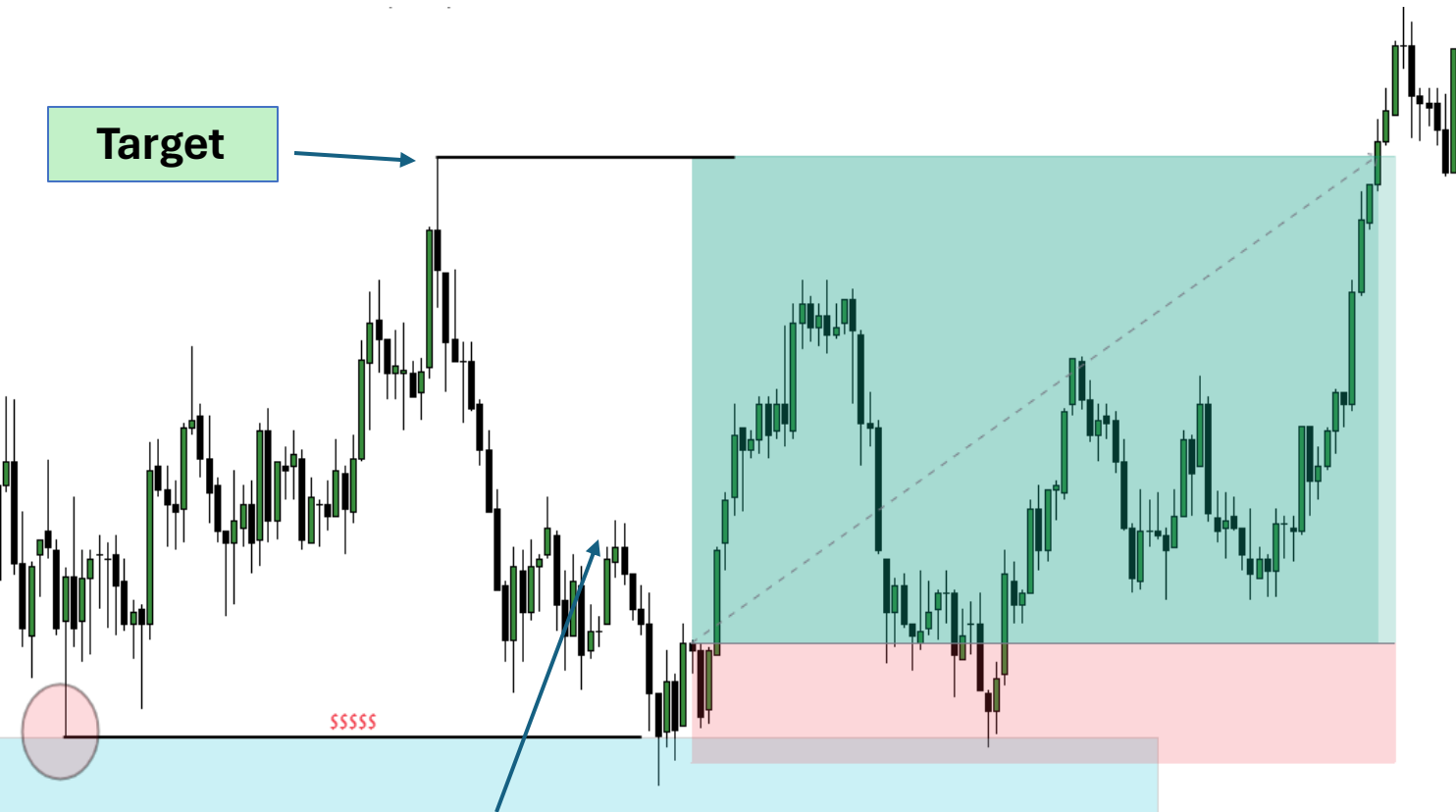


**It is optimal to manage your trades actively instead of just going for either a full win or loss. I always close partial profits along the way!!!**

**You can also close partials along the way on 1min time frame highs**



# 1min TF Entry SL And TP (Example 2)



Target

SSSSS

You can also close partials along the way on  
1min time frame highs

It is optimal to manage your trades  
actively instead of just going for  
either a full win or loss. I always  
close partial profits along the way!!!

This is UP TO YOU, your personal  
preference and your backtesting!!!!

# THE END

## Hope That You Enjoyed

**Hopefully you liked this spectacular strategy. If YES,  
go ahead and LIKE, SUBSCRIBE, AND SHARE**

**AND, If you want to trade live with me and learn  
from a 7 figure funded trader, then go ahead and  
enroll in any of my exceptional services for MORE  
and way MORE POWERFUL Strategies!!!!!!**



**JOIN BY CLICKING HERE!!!**